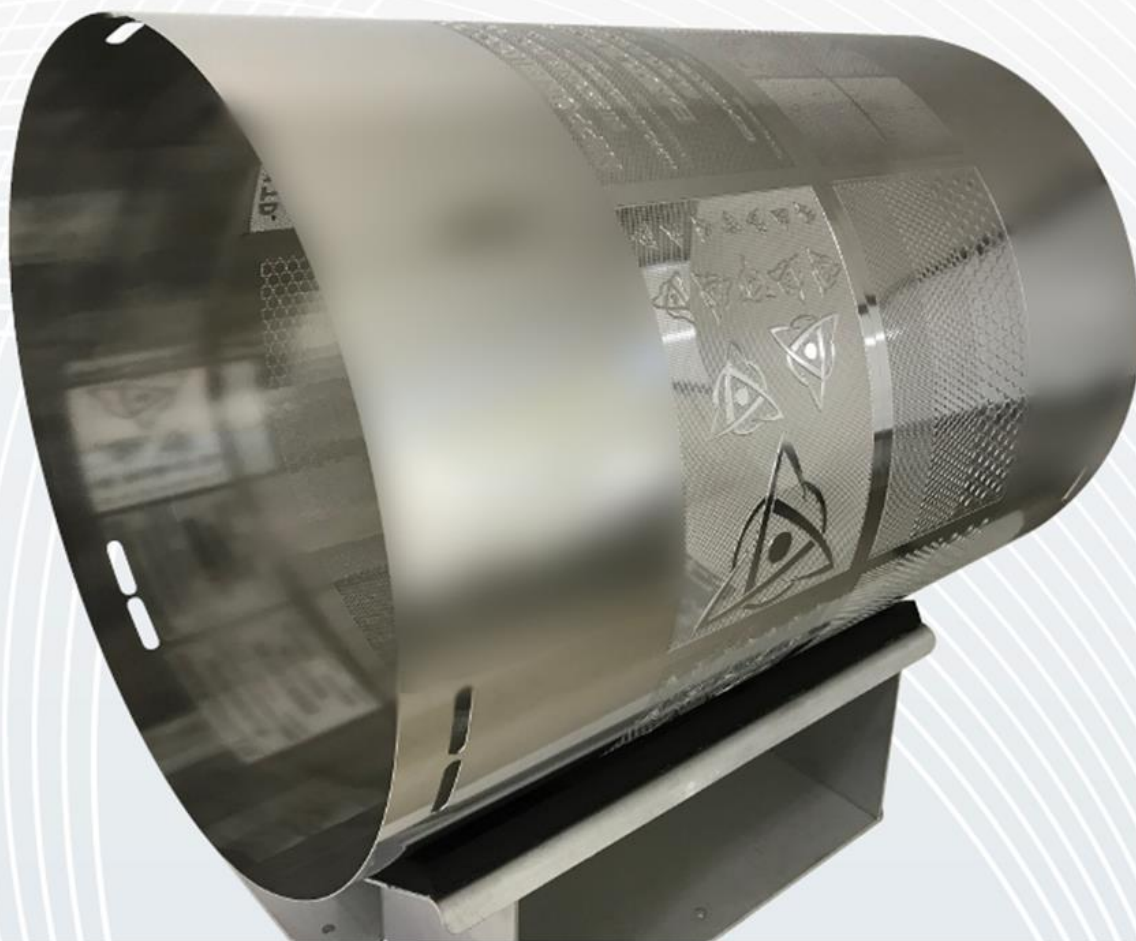
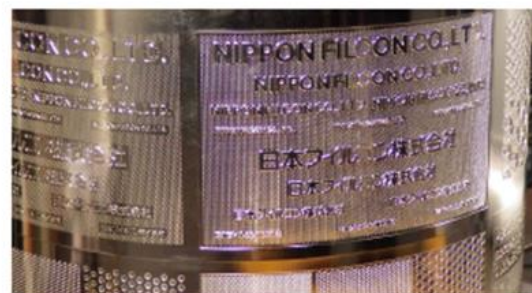


# SPUNART™

**Patented** (US, EP, CN, etc.)

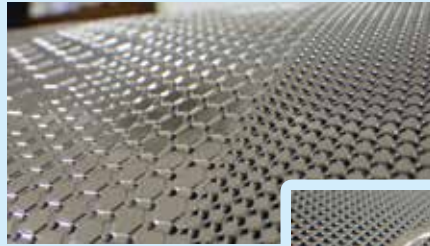
Filcon's unique SPUNART technology offers a functional and creative solution for nonwoven products made on spunlace machines.



**NIPPON FILCON CO., LTD.**

<http://www.filcon.co.jp/>

# SPUNART

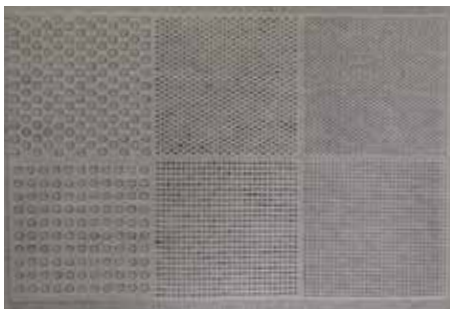


## Easy Test

Test plates (A4 size) are available with your own design.

Benefit: Low cost & Low risk!

We can arrange several patterns in one plate.



## Mesh Patterns

Houndstooth



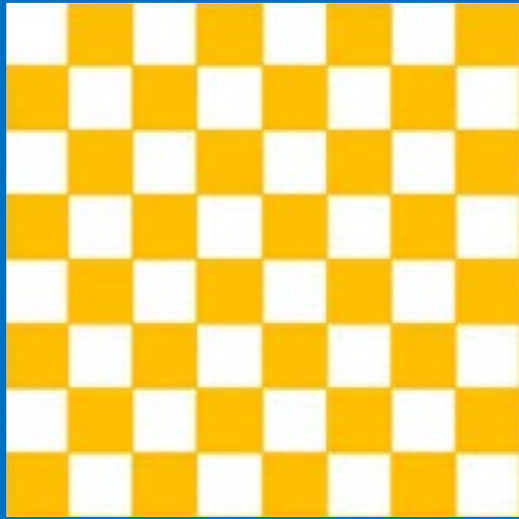
Plaid



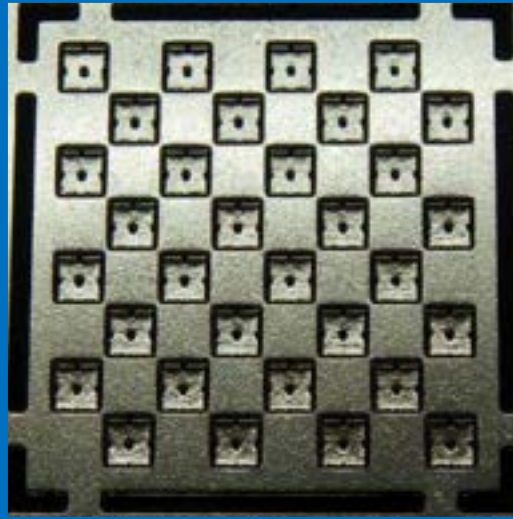
## Shade Pattern (Watermark)



**SPUNART plate No.001**  
**Pattern\_1**



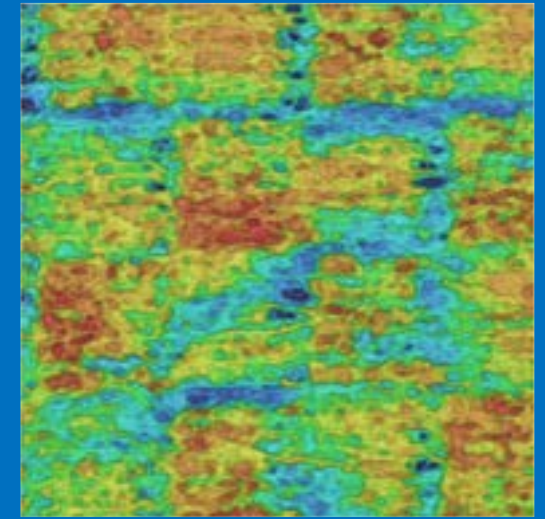
CAD



SPUNART



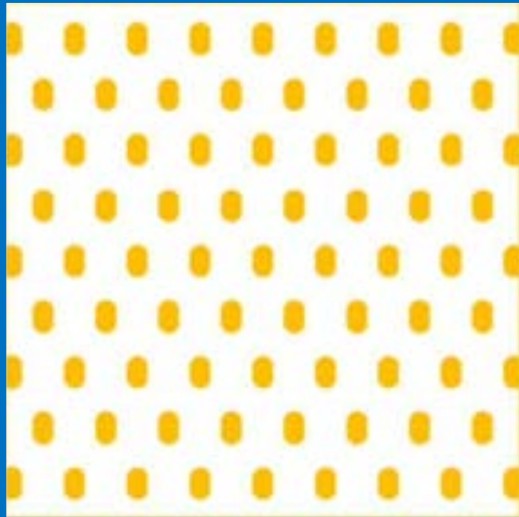
Patterned  
Non-woven



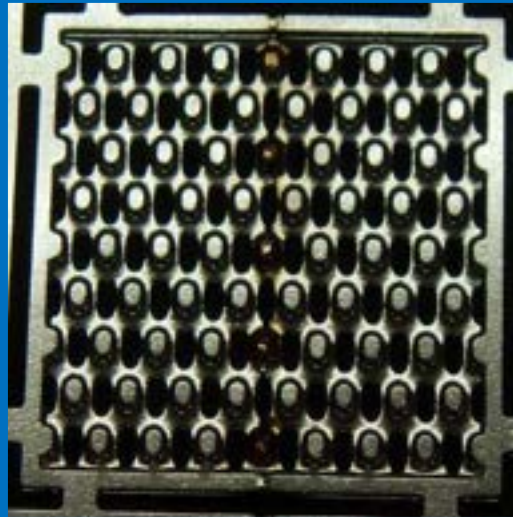
3D data

SPUNART Material\_SUS304, Thickness\_1.0mm  
Non-woven Material\_100% rayon, Weight per area\_50g/m<sup>2</sup>

SPUNART plate No.001  
Pattern\_2



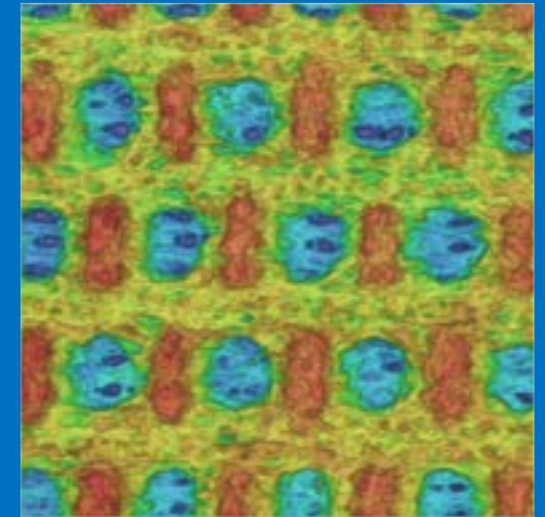
CAD



SPUNART



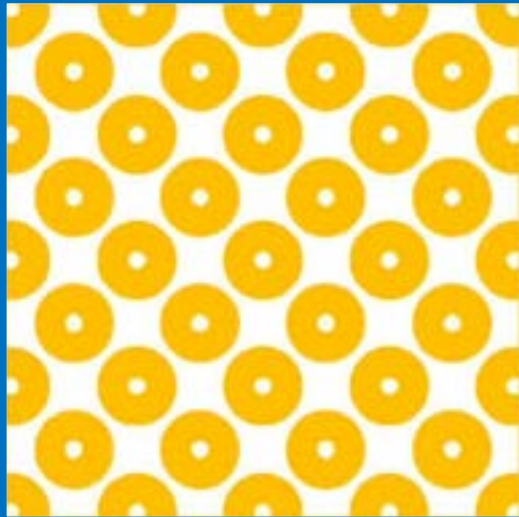
Patterned  
Non-woven



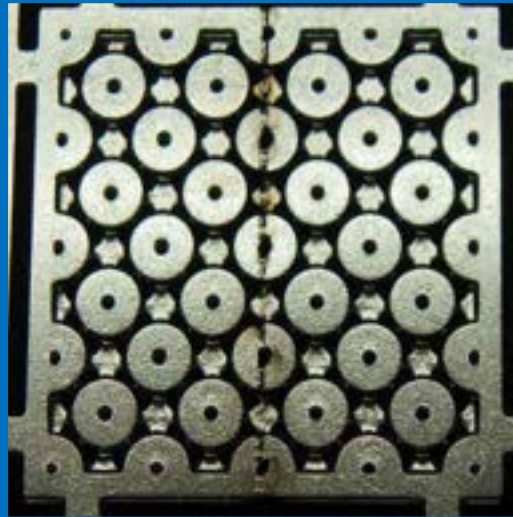
3D data

SPUNART Material\_SUS304, Thickness\_1.0mm  
Non-woven Material\_100% rayon, Weight per area\_50g/m<sup>2</sup>

**SPUNART plate No.001**  
**Pattern\_3**



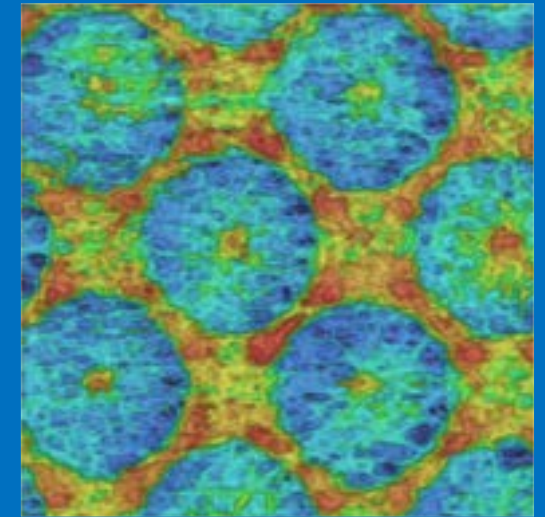
CAD



SPUNART



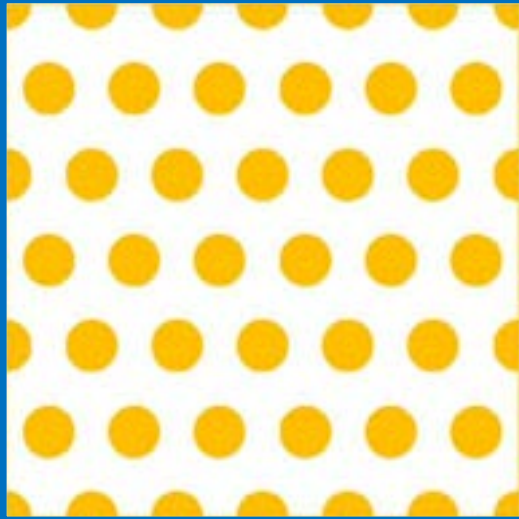
Patterned  
Non-woven



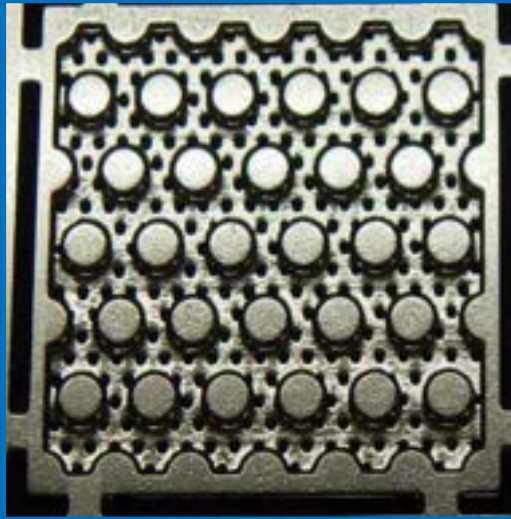
3D data

SPUNART Material\_SUS304, Thickness\_1.0mm  
Non-woven Material\_100% rayon, Weight per area\_50g/m<sup>2</sup>

**SPUNART plate No.001**  
**Pattern\_4**



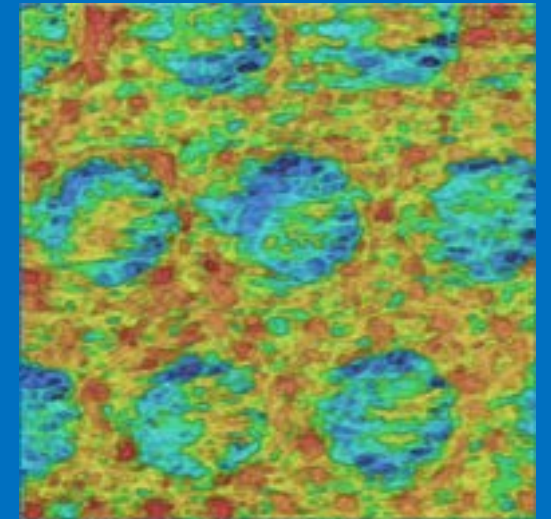
CAD



SPUNART



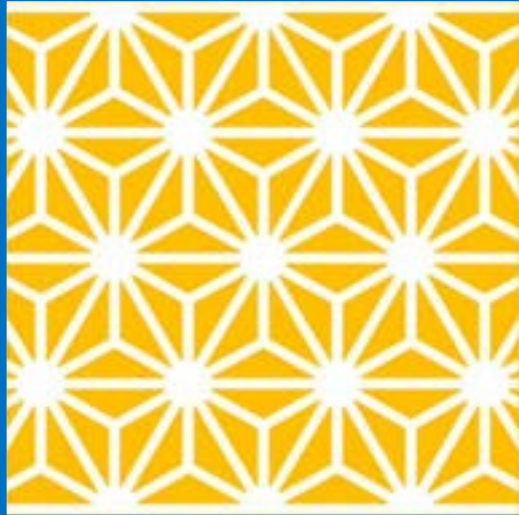
Patterned  
Non-woven



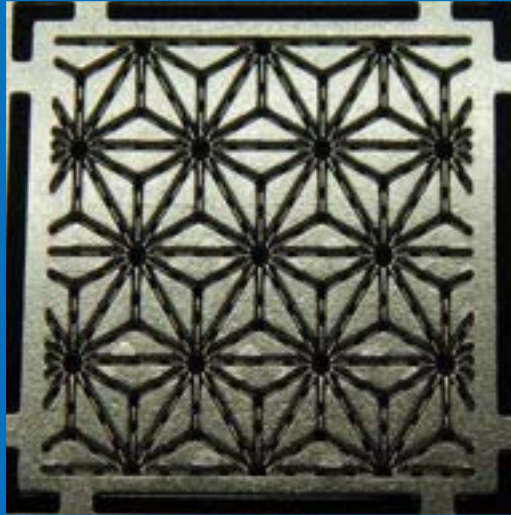
3D data

SPUNART Material\_SUS304, Thickness\_1.0mm  
Non-woven Material\_100% rayon, Weight per area\_50g/m<sup>2</sup>

**SPUNART plate No.001**  
**Pattern\_5**



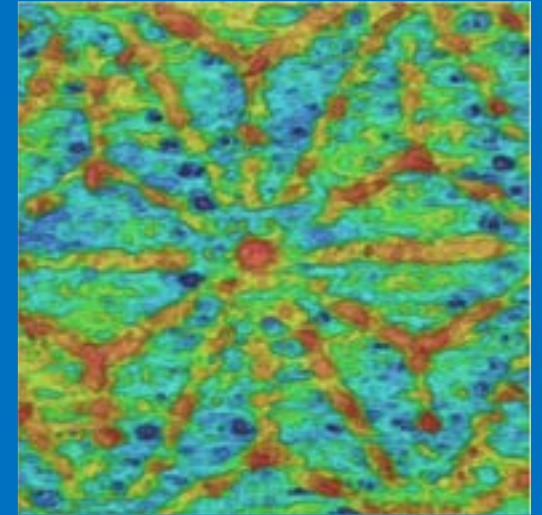
CAD



SPUNART



Patterned  
Non-woven



3D data

SPUNART Material\_SUS304, Thickness\_1.0mm  
Non-woven Material\_100% rayon, Weight per area\_50g/m<sup>2</sup>

**SPUNART plate No.001  
Pattern\_6**



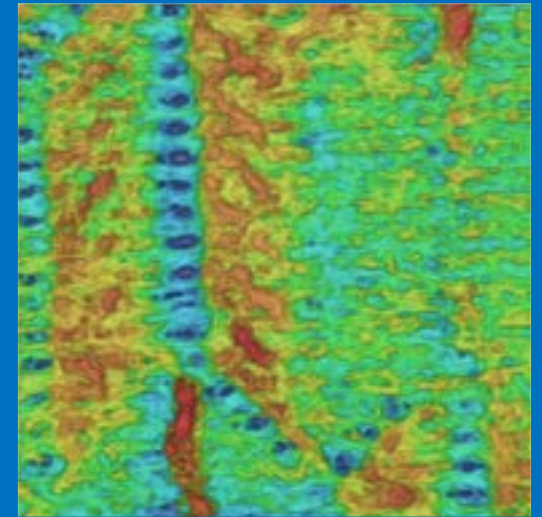
CAD



SPUNART



Patterned  
Non-woven



3D data

SPUNART Material\_SUS304, Thickness\_1.0mm  
Non-woven Material\_100% rayon, Weight per area\_50g/m<sup>2</sup>

**SPUNART plate No.001  
Pattern\_7**



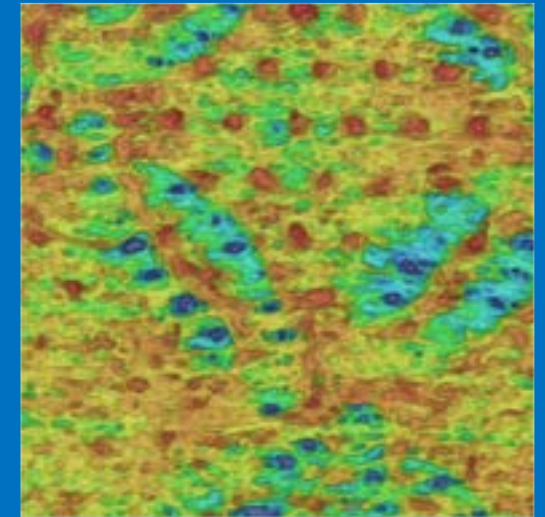
CAD



SPUNART



Patterned  
Non-woven



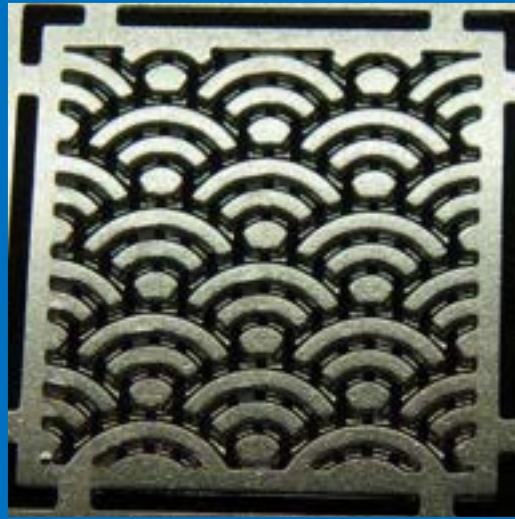
3D data

SPUNART Material\_SUS304, Thickness\_1.0mm  
Non-woven Material\_100% rayon, Weight per area\_50g/m<sup>2</sup>

**SPUNART plate No.001**  
**Pattern\_8**



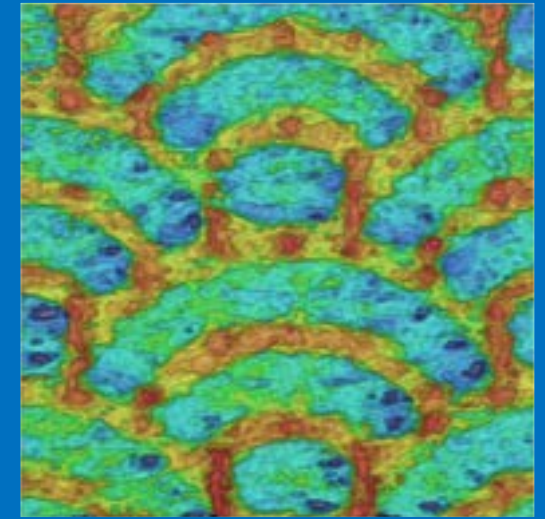
CAD



SPUNART



Patterned  
Non-woven



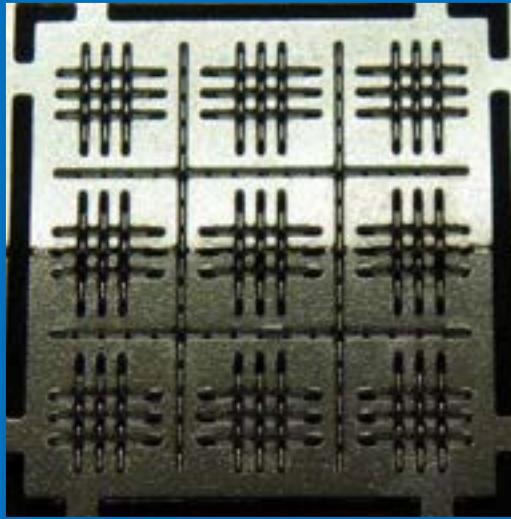
3D data

SPUNART Material\_SUS304, Thickness\_1.0mm  
Non-woven Material\_100% rayon, Weight per area\_50g/m<sup>2</sup>

**SPUNART plate No.001**  
**Pattern\_9**



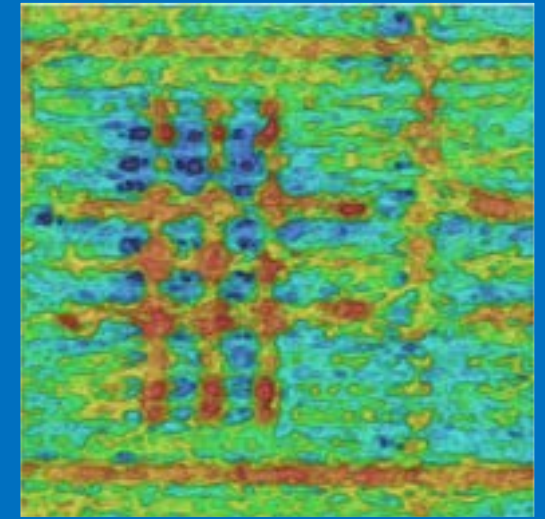
CAD



SPUNART



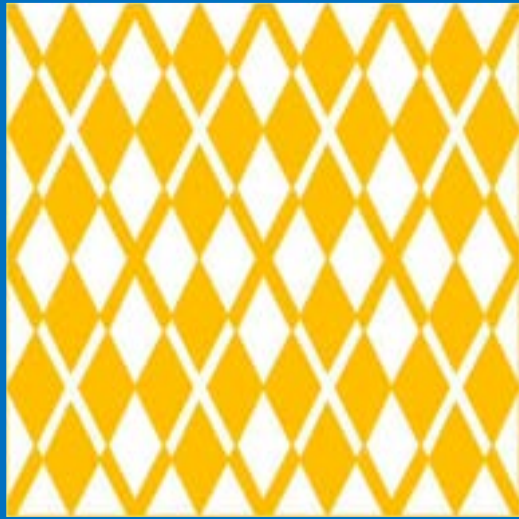
Patterned  
Non-woven



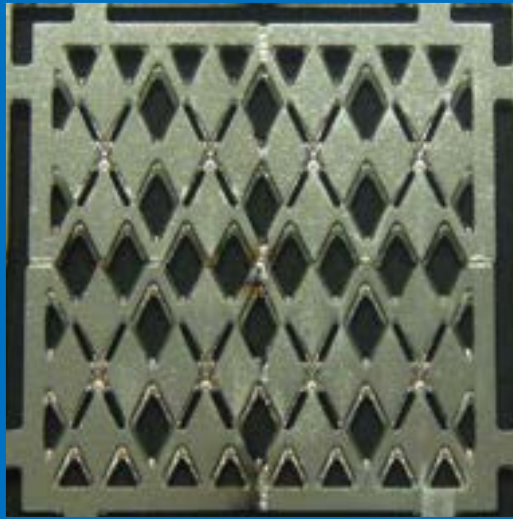
3D data

SPUNART Material\_SUS304, Thickness\_1.0mm  
Non-woven Material\_100% rayon, Weight per area\_50g/m<sup>2</sup>

**SPUNART plate No.001**  
**Pattern\_10**



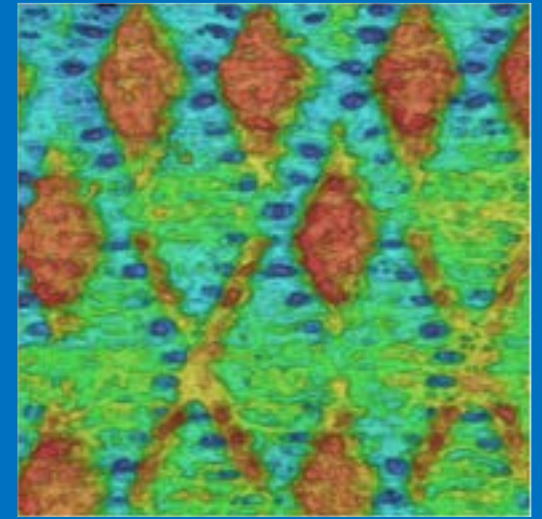
CAD



SPUNART



Patterned  
Non-woven



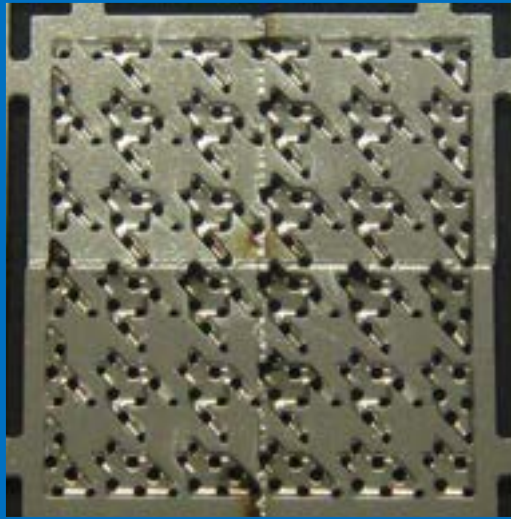
3D data

SPUNART Material\_SUS304, Thickness\_1.0mm  
Non-woven Material\_100% rayon, Weight per area\_50g/m<sup>2</sup>

**SPUNART plate No.001**  
**Pattern\_11**



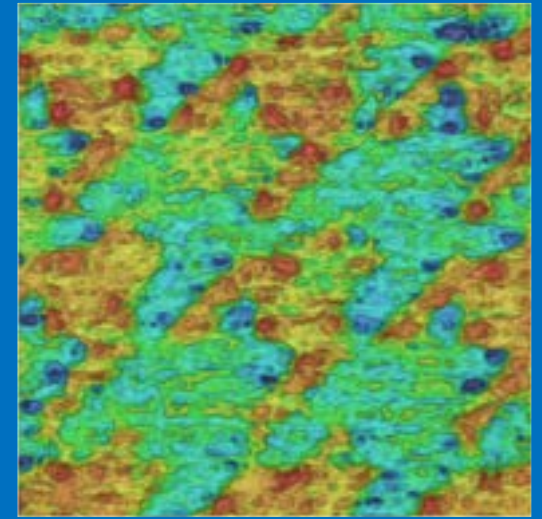
CAD



SPUNART



Patterned  
Non-woven

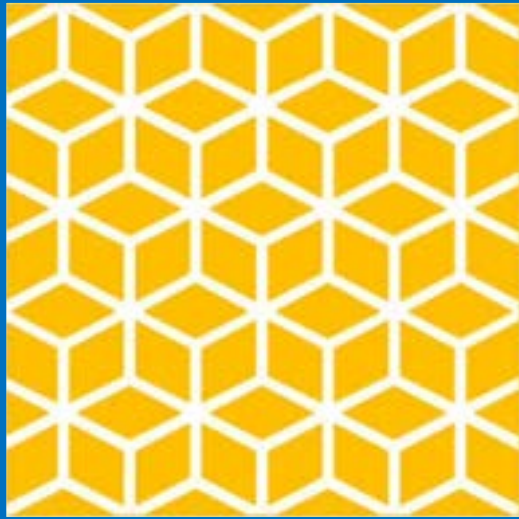


3D data

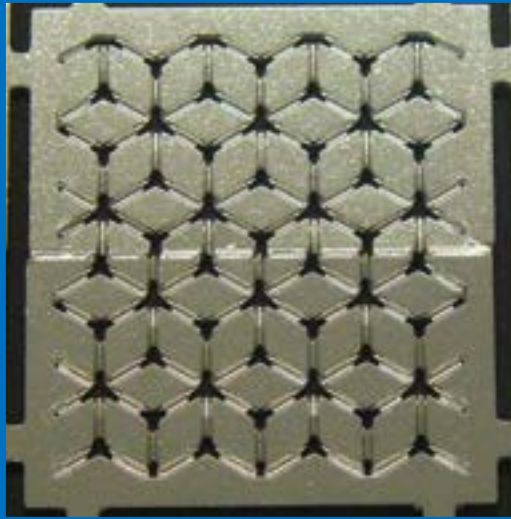
SPUNART Material\_SUS304, Thickness\_1.0mm

Non-woven Material\_100% rayon, Weight per area\_50g/m<sup>2</sup>

**SPUNART plate No.001**  
**Pattern\_12**



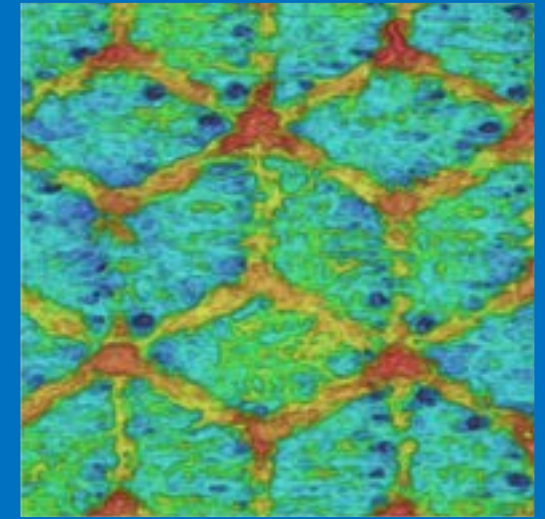
CAD



SPUNART



Patterned  
Non-woven



3D data

SPUNART Material\_SUS304, Thickness\_1.0mm  
Non-woven Material\_100% rayon, Weight per area\_50g/m<sup>2</sup>

**SPUNART plate No.001**  
**Pattern\_13**



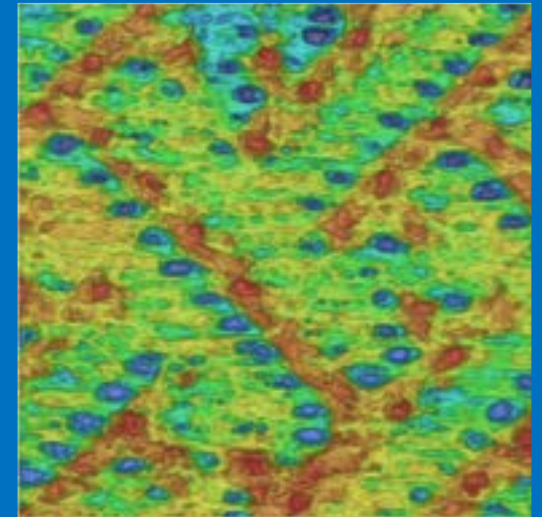
CAD



SPUNART



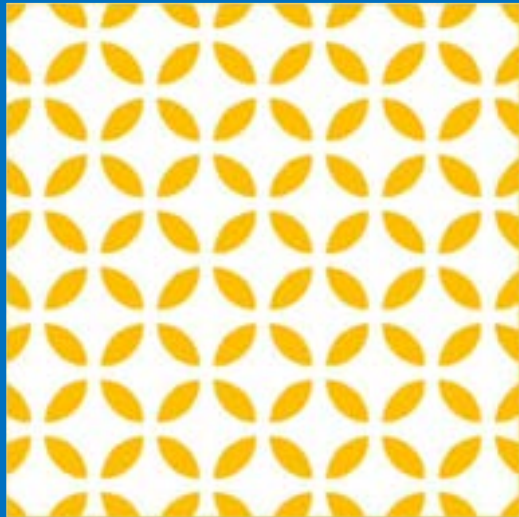
Patterned  
Non-woven



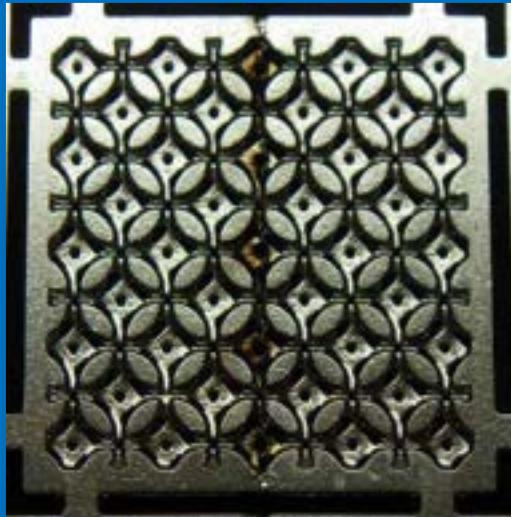
3D data

SPUNART Material\_SUS304, Thickness\_1.0mm  
Non-woven Material\_100% rayon, Weight per area\_50g/m<sup>2</sup>

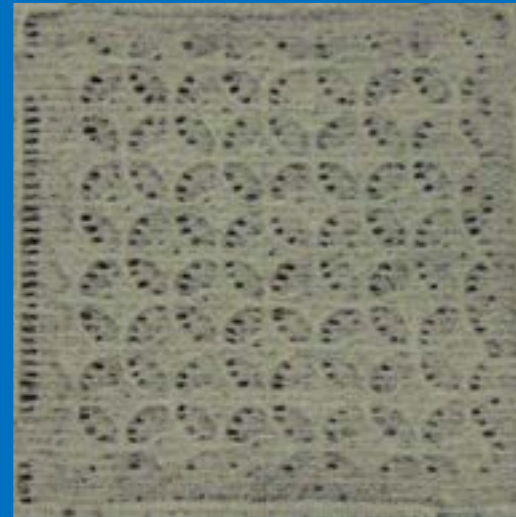
**SPUNART plate No.001**  
**Pattern\_14**



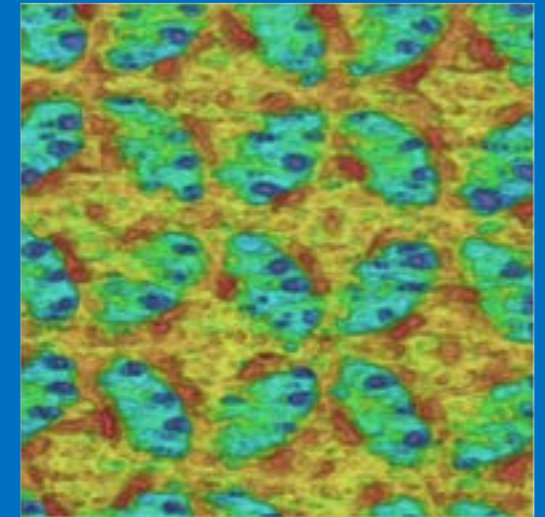
CAD



SPUNART



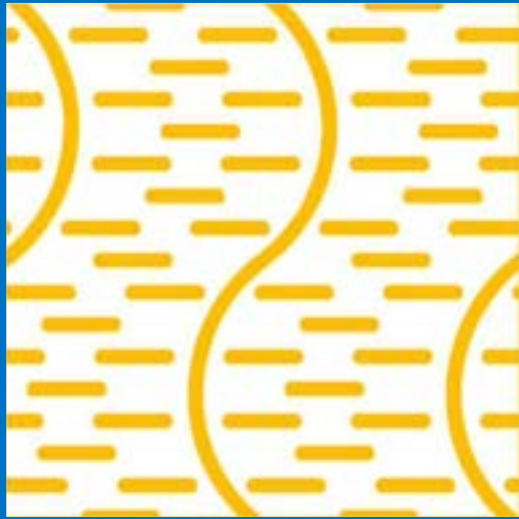
Patterned  
Non-woven



3D data

SPUNART Material\_SUS304, Thickness\_1.0mm  
Non-woven Material\_100% rayon, Weight per area\_50g/m<sup>2</sup>

**SPUNART plate No.001**  
**Pattern\_15**



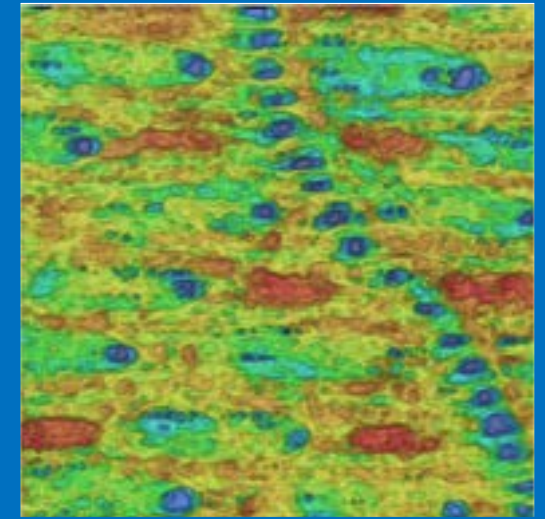
CAD



SPUNART



Patterned  
Non-woven

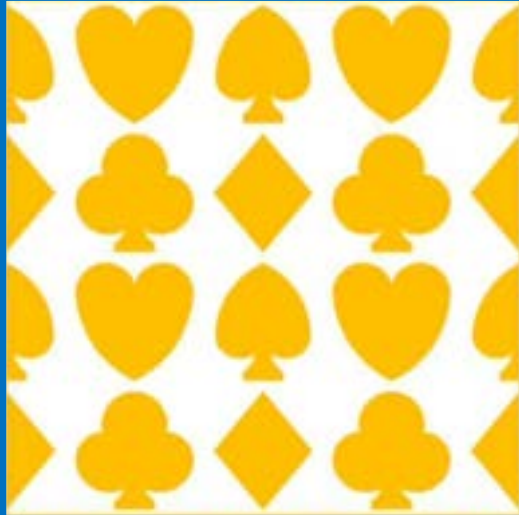


3D data

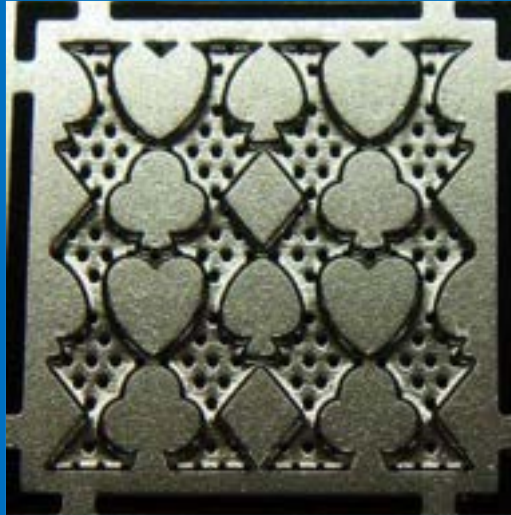
SPUNART Material\_SUS304, Thickness\_1.0mm

Non-woven Material\_100% rayon, Weight per area\_50g/m<sup>2</sup>

**SPUNART plate No.001**  
**Pattern\_16**



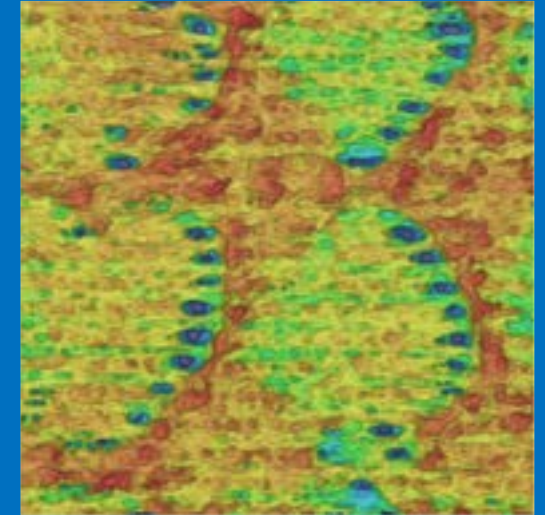
CAD



SPUNART



Patterned  
Non-woven



3D data

SPUNART Material\_SUS304, Thickness\_1.0mm  
Non-woven Material\_100% rayon, Weight per area\_50g/m<sup>2</sup>

SPUNART plate No.001  
Pattern\_17



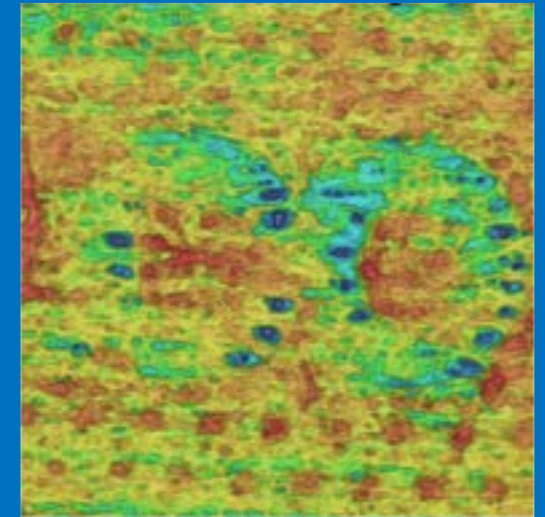
CAD



SPUNART



Patterned  
Non-woven



3D data

SPUNART Material\_SUS304, Thickness\_1.0mm  
Non-woven Material\_100% rayon, Weight per area\_50g/m<sup>2</sup>

**SPUNART plate No.001**  
**Pattern\_18**



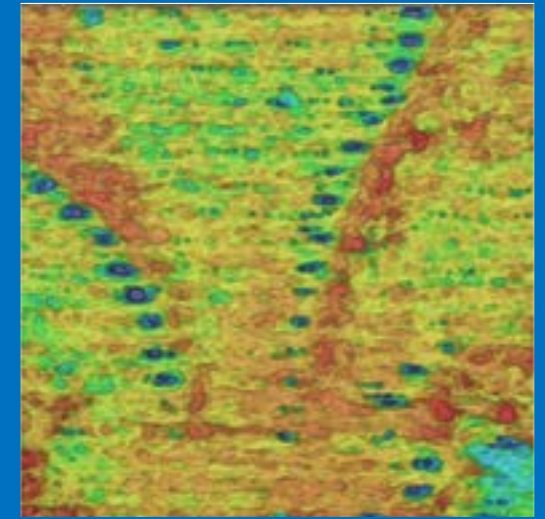
CAD



SPUNART



Patterned  
Non-woven



3D data

SPUNART Material\_SUS304, Thickness\_1.0mm  
Non-woven Material\_100% rayon, Weight per area\_50g/m<sup>2</sup>

**SPUNART plate No.001**  
**Pattern\_19**



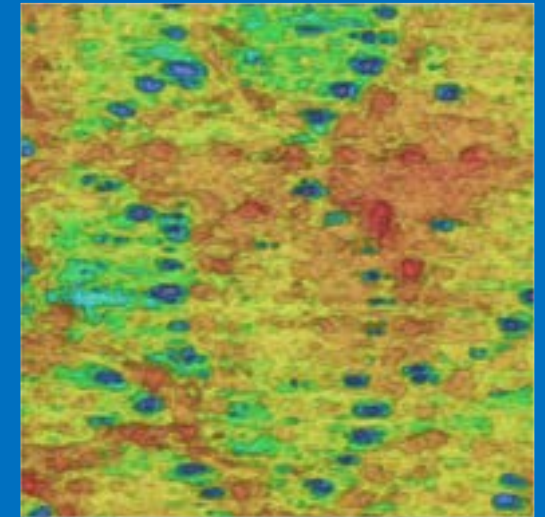
CAD



SPUNART



Patterned  
Non-woven



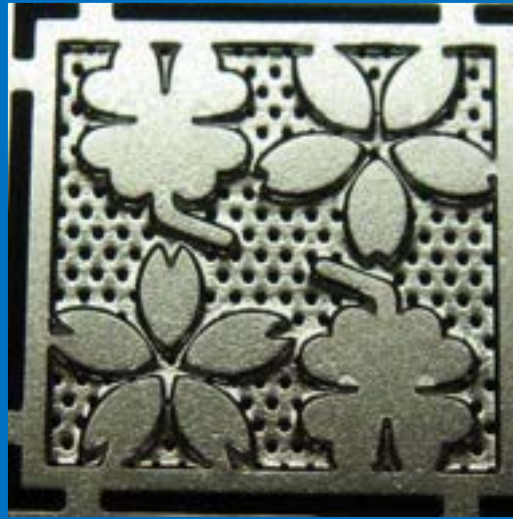
3D data

SPUNART Material\_SUS304, Thickness\_1.0mm  
Non-woven Material\_100% rayon, Weight per area\_50g/m<sup>2</sup>

**SPUNART plate No.001**  
**Pattern\_20**



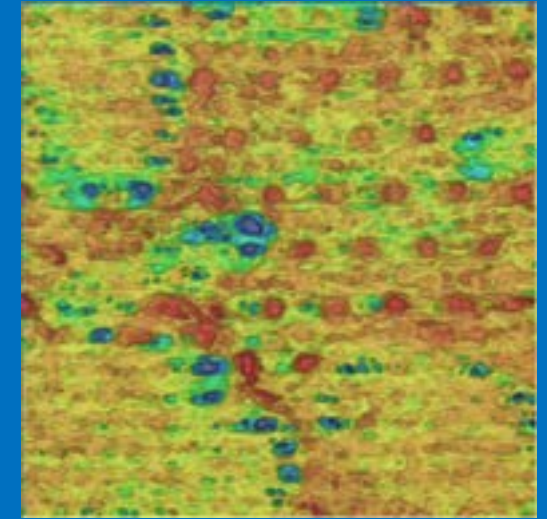
CAD



SPUNART



Patterned  
Non-woven



3D data

SPUNART Material\_SUS304, Thickness\_1.0mm  
Non-woven Material\_100% rayon, Weight per area\_50g/m<sup>2</sup>

## SPUNART Pattern No.21



CAD

SPUNART

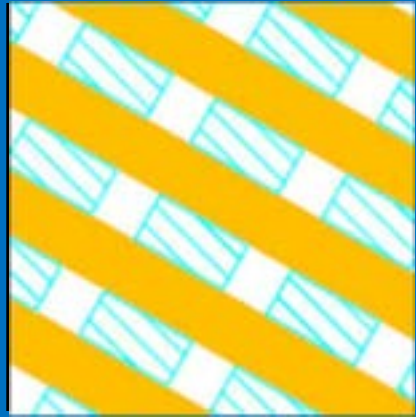
Patterned  
Non-woven

Photo

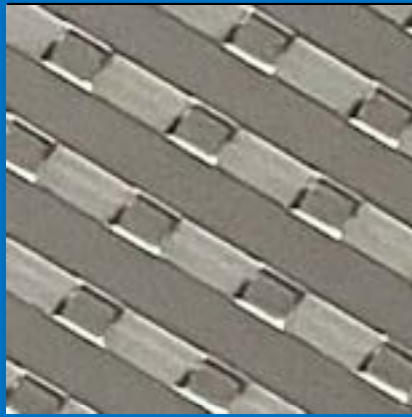
Contour plot image

SPUNART Material\_SUS304, Thickness\_1.5mm  
Non-woven Material\_100% rayon, Weight per area\_50g/m<sup>2</sup>

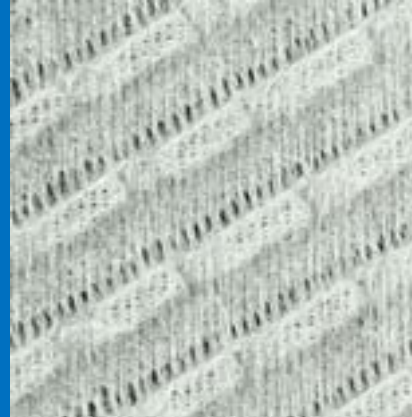
## SPUNART Pattern No.22



CAD



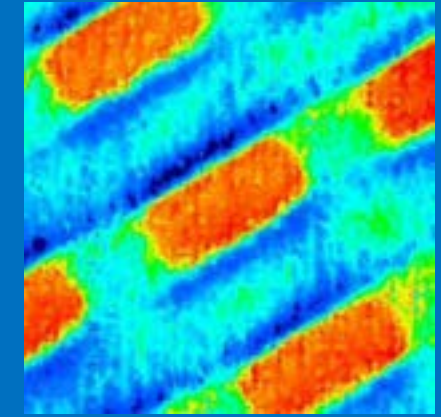
SPUNART



Patterned  
Non-woven



Photo

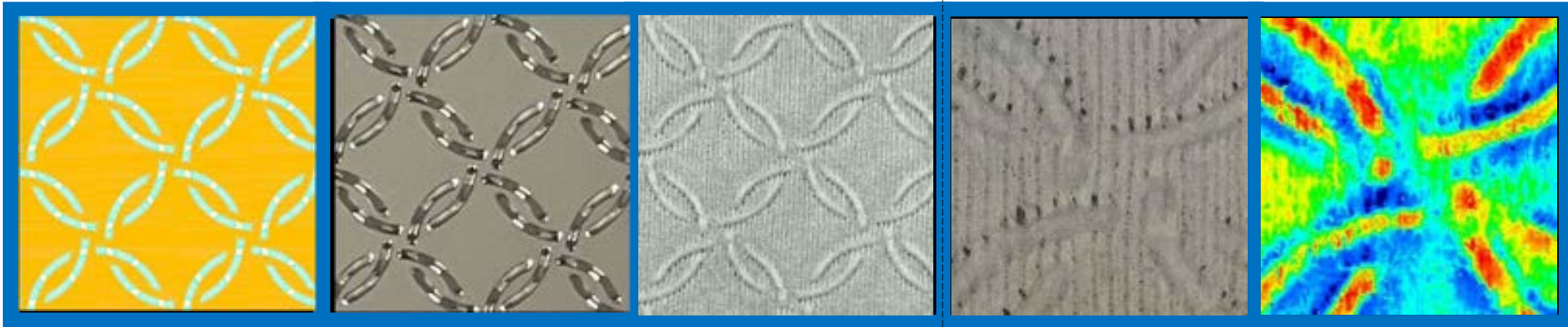


Contour plot image

SPUNART Material\_SUS304, Thickness\_1.5mm

Non-woven Material\_100% rayon, Weight per area\_50g/m<sup>2</sup>

## SPUNART Pattern No.23



CAD

SPUNART

Patterned  
Non-woven

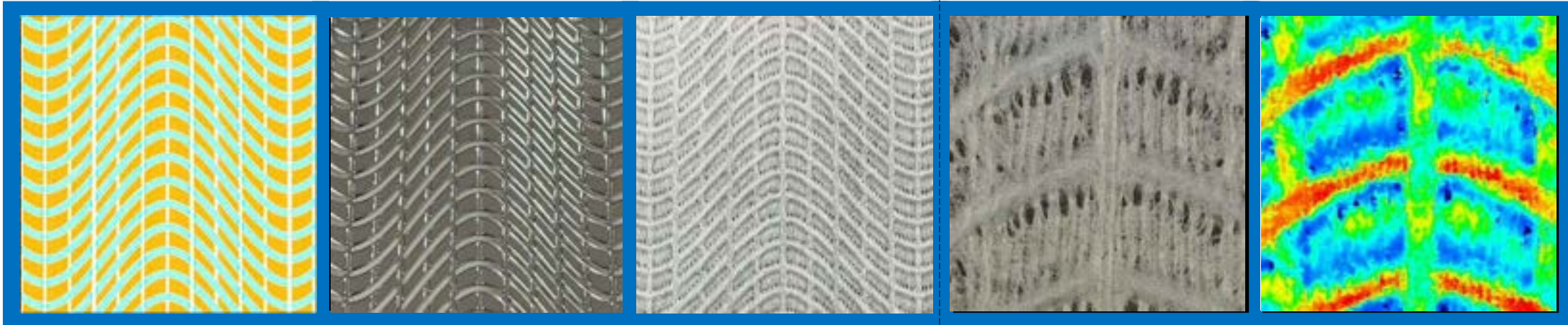
Photo

Contour plot image

SPUNART Material\_SUS304, Thickness\_1.5mm

Non-woven Material\_100% rayon, Weight per area\_50g/m<sup>2</sup>

## SPUNART Pattern No.24



CAD

SPUNART

Patterned  
Non-woven

Photo

Contour plot image

SPUNART Material\_SUS304, Thickness\_1.5mm

Non-woven Material\_100% rayon, Weight per area\_50g/m<sup>2</sup>

## SPUNART Pattern No.25



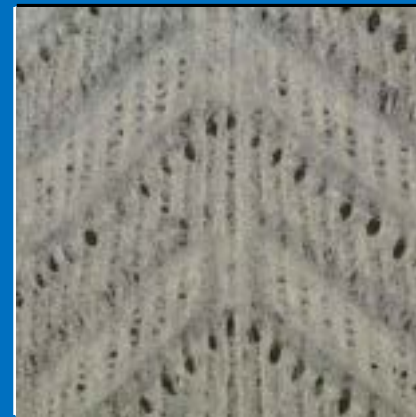
CAD



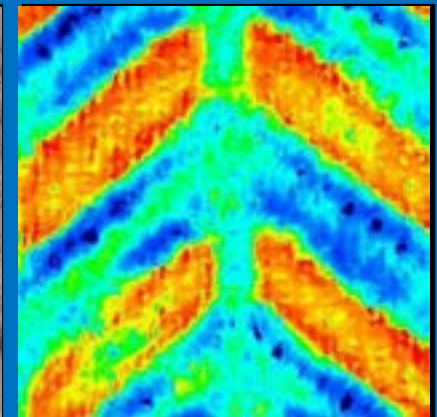
SPUNART



Patterned  
Non-woven



Photo



Contour plot image

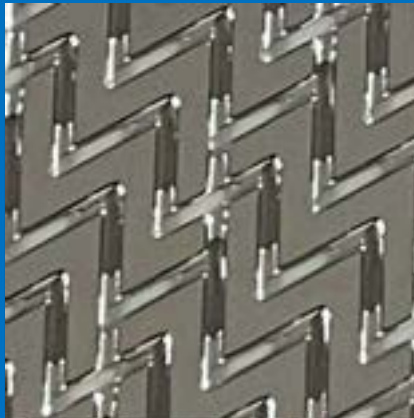
SPUNART Material\_SUS304, Thickness\_1.5mm

Non-woven Material\_100% rayon, Weight per area\_50g/m<sup>2</sup>

## SPUNART Pattern No.26



CAD



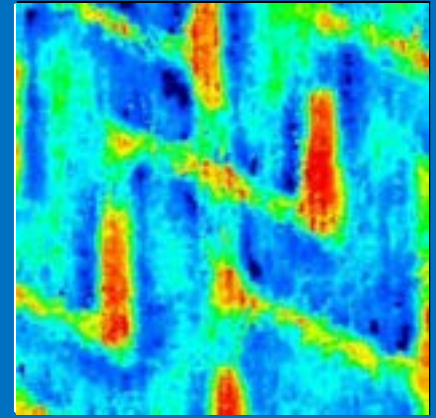
SPUNART



Patterned  
Non-woven



Photo

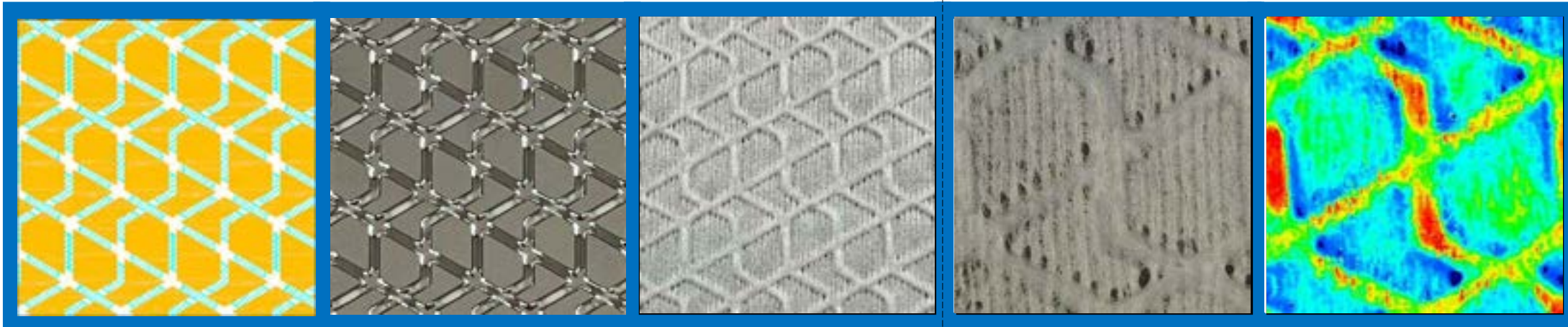


Contour plot image

SPUNART Material\_SUS304, Thickness\_1.5mm

Non-woven Material\_100% rayon, Weight per area\_50g/m<sup>2</sup>

## SPUNART Pattern No.27



CAD

SPUNART

Patterned  
Non-woven

Photo

Contour plot image

SPUNART Material\_SUS304, Thickness\_1.5mm

Non-woven Material\_100% rayon, Weight per area\_50g/m<sup>2</sup>

## SPUNART Pattern No.28



CAD

SPUNART

Patterned  
Non-woven

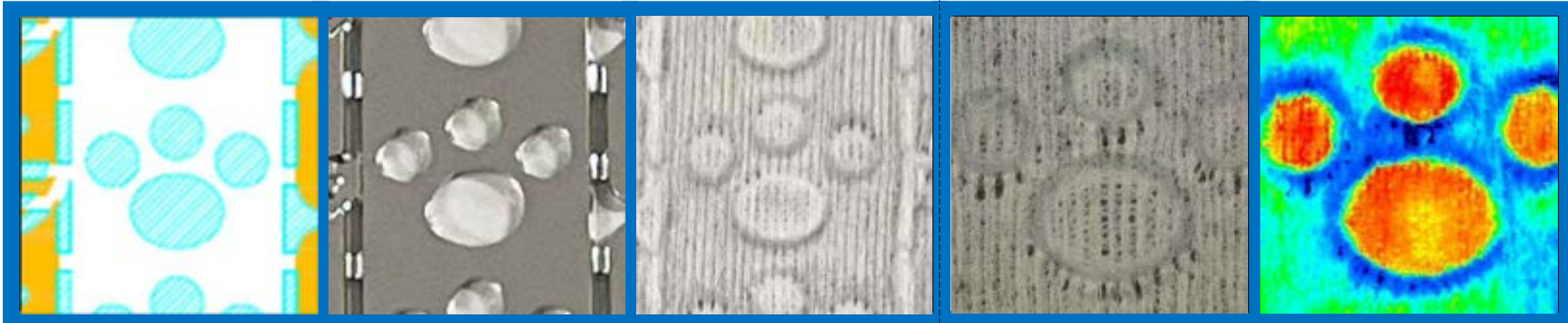
Photo

Contour plot image

SPUNART Material\_SUS304, Thickness\_1.5mm

Non-woven Material\_100% rayon, Weight per area\_50g/m<sup>2</sup>

## SPUNART Pattern No.29



CAD

SPUNART

Patterned  
Non-woven

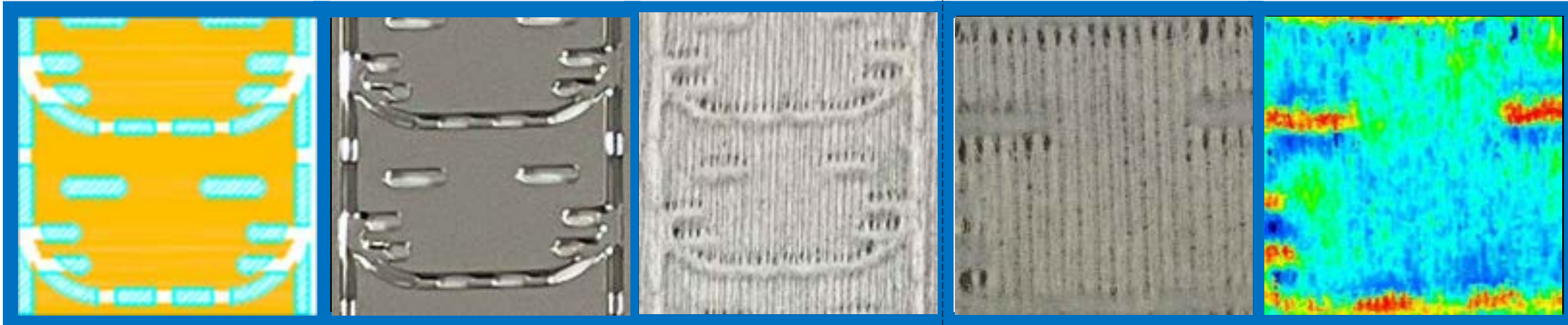
Photo

Contour plot image

SPUNART Material\_SUS304, Thickness\_1.5mm

Non-woven Material\_100% rayon, Weight per area\_50g/m<sup>2</sup>

## SPUNART Pattern No.30



CAD

SPUNART

Patterned  
Non-woven

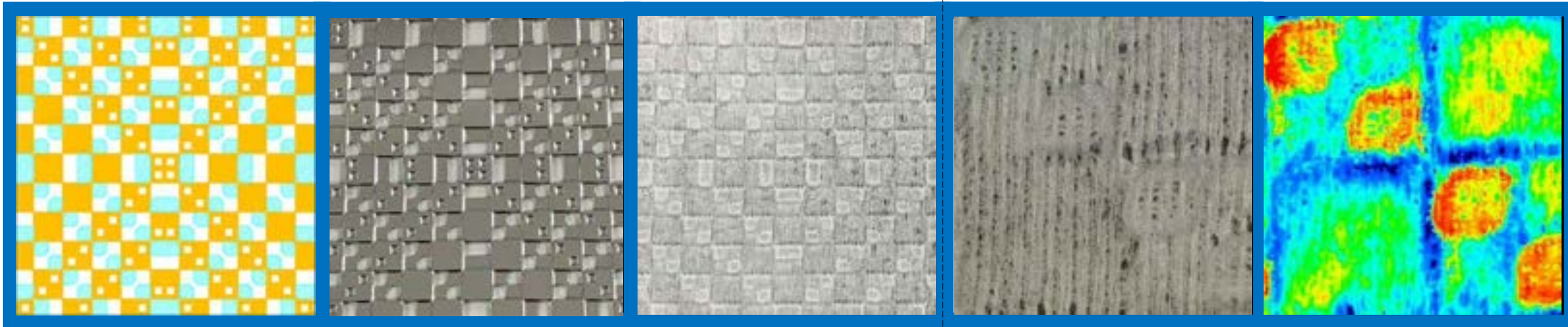
Photo

Contour plot image

SPUNART Material\_SUS304, Thickness\_1.5mm

Non-woven Material\_100% rayon, Weight per area\_50g/m<sup>2</sup>

## SPUNART Pattern No.31



CAD

SPUNART

Patterned  
Non-woven

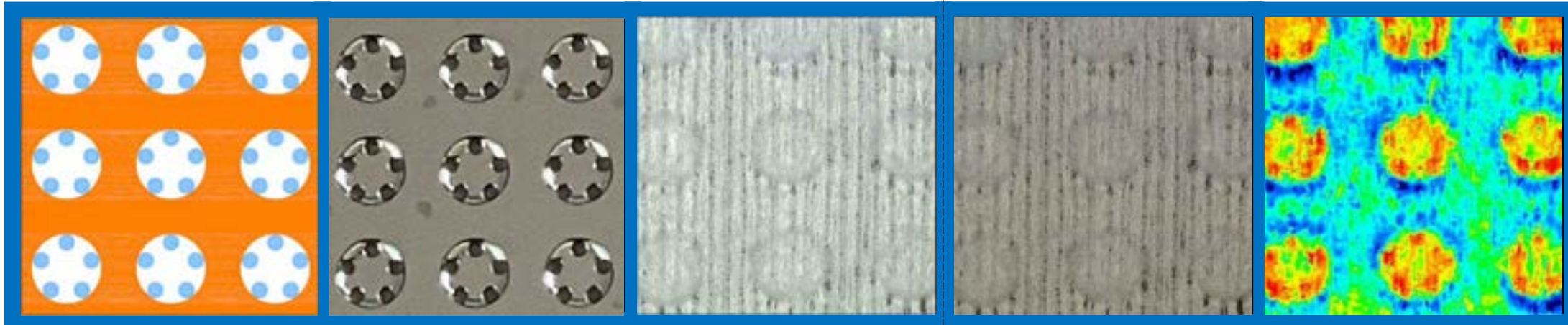
Photo

Contour plot image

SPUNART Material\_SUS304, Thickness\_1.5mm

Non-woven Material\_100% rayon, Weight per area\_50g/m<sup>2</sup>

## SPUNART Pattern No.32



CAD

SPUNART

Patterned  
Non-woven

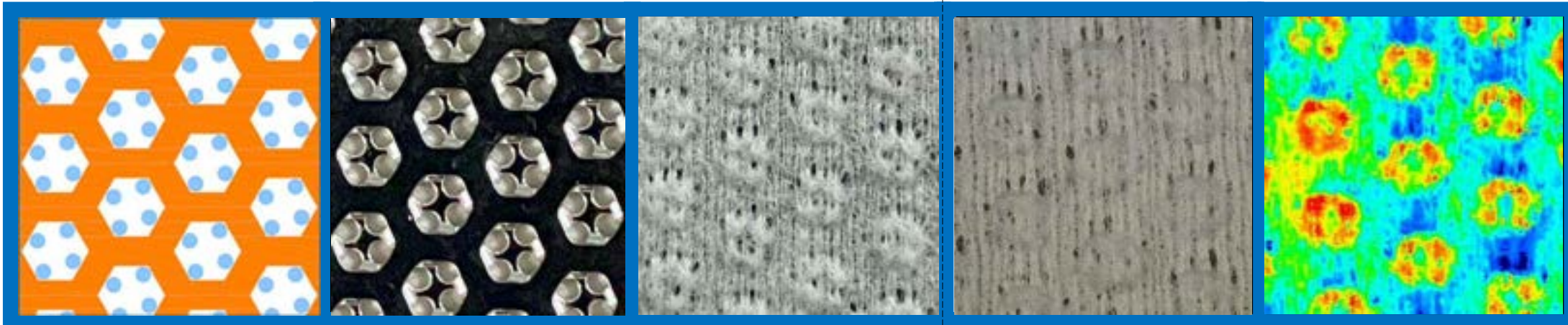
Photo

Contour plot image

SPUNART Material\_SUS304, Thickness\_1.0mm

Non-woven Material\_100% rayon, Weight per area\_50g/m<sup>2</sup>

## SPUNART Pattern No.33



CAD

SPUNART

Patterned  
Non-woven

Photo

Contour plot image

SPUNART Material\_SUS304, Thickness\_1.0mm

Non-woven Material\_100% rayon, Weight per area\_50g/m<sup>2</sup>

## SPUNART Pattern No.34



CAD

SPUNART

Patterned  
Non-woven

Photo

Contour plot image

SPUNART Material\_SUS304, Thickness\_1.0mm

Non-woven Material\_100% rayon, Weight per area\_50g/m<sup>2</sup>